



Welcome to
“Ramanashree Blue Sky Gardenia” A BBMP Approved 2 & 3 BHK residential apartments located in the hub of IT Companies, Yelahanka-Dodaballapur Road is close proximity to many of the well known locations, Educational institutions, Hospitals and Shopping Centers making it an attractive options for the Home buyers. It would have a total 40 Units. The Apartment Built up area will range from 1025 Sq.ft. to 1500 sq.ft.

The Compositions of “Ramanashree Blue Sky Gardenia” is Stilt, Ground Floor & 3 upper Floors storied Building with Three Blocks which Completed touch to your imagination for a beautiful life style, with its teamwork of finest Architects, structural Engineers, landscape architects and best construction team for quality construction of its own.

For Enough. Near Enough.

Location is just the factor which makes BLUE SKY GARDENIA lucrative

Bangalore, June 4 (IANS) Bangalore will have the country's first Information Technology Investment Region (ITIR) for knowledge-based industries, including software and hardware firms with entire supply chain, an official said Monday.

"The ITIR is projected to attract global investments to the tune of Rs.2 trillion and create a million direct jobs over the next 10 years," an official said.

The high-powered committee of the ministry of communications and information technology has approved the ITIR proposal from Karnataka and forwarded it to the union cabinet for clearance, which is expected soon.

"The integrated region will be built under the PPP (public-private partnership) model with joint investment by the central and state governments near the international airport," Industry Secretary M.N. Vidyashankar told reporters here.

The state government plans to float a global tender to select a developer to build the ITIR in about 10,200 acres in two phases.

Land measuring 2,080 acres has been identified for the first phase and preliminary notification issued to farmers for acquisition at the prevalent market rate.

"The knowledge park will be a self-sustainable integrated investment region for setting up software firms, back offices and an hardware park for electronics cluster, including chip designing and manufacturing units, with world class infrastructure facilities," Vidyashankar said.

The region will also have a residential township, an airstrip, high-speed rail network, shopping plaza, hospitals, schools and recreational facilities for the communities living there.

"We have appointed international consultancy firm Deloitte to prepare an RFP (request for proposal) documents and terms and conditions for the global tender to select project developers," the official said.

Indian IT bellwethers TCS, Infosys and Wipro have shown interest in setting up their software development centres in the region.

"Companies in the region will be entitled to tax and other incentives similar to those being provided under the SEZ (special economic zone) policy by the central government," Vidyashankar added.

Andhra Pradesh and Tamil Nadu are the other two states which have proposed similar investment regions in their respective states

The philosophy of
Ramanashree
Blue Sky Gardenia is simple.

We have combined urban amenities which are essential for modern day living with purity of what nature has to offer. Finish your work out in our well gym with few laps at the swimming pool. Come relax and rejuvenate with host of recreational facilities
at Blue Sky Gardenia



- 10000 acres upcoming software SEZ just 10 km away.

- Located on Yelahanka-Doddabalapur Road proposed to be a six lane road.

- Upcoming intermedia road which would make international airport just minutes drive is just 3 km from
"Ramanashree Blue Sky Gardenia"



- Peripheral Ring Road connecting all major points of Bangalore is just 5 km away.

- Apart from "Ramanashree Blue Sky Gardenia" major Apartment community the radius of 5 km -making a high class residential Apartments hub.

- Best Schools and colleges like Ryan International School, Delhi Public School, Nagarjuna International Public School & College, Canadian Public School, B MSIT Engineering College, all within 3Kmts.

Yet for enough from the hustle and bustle, the tensions and the pollution of the city.





Welcome to Blue Sky Gardenia
in your lifestyle



Blue Sky Gardenia Amenities

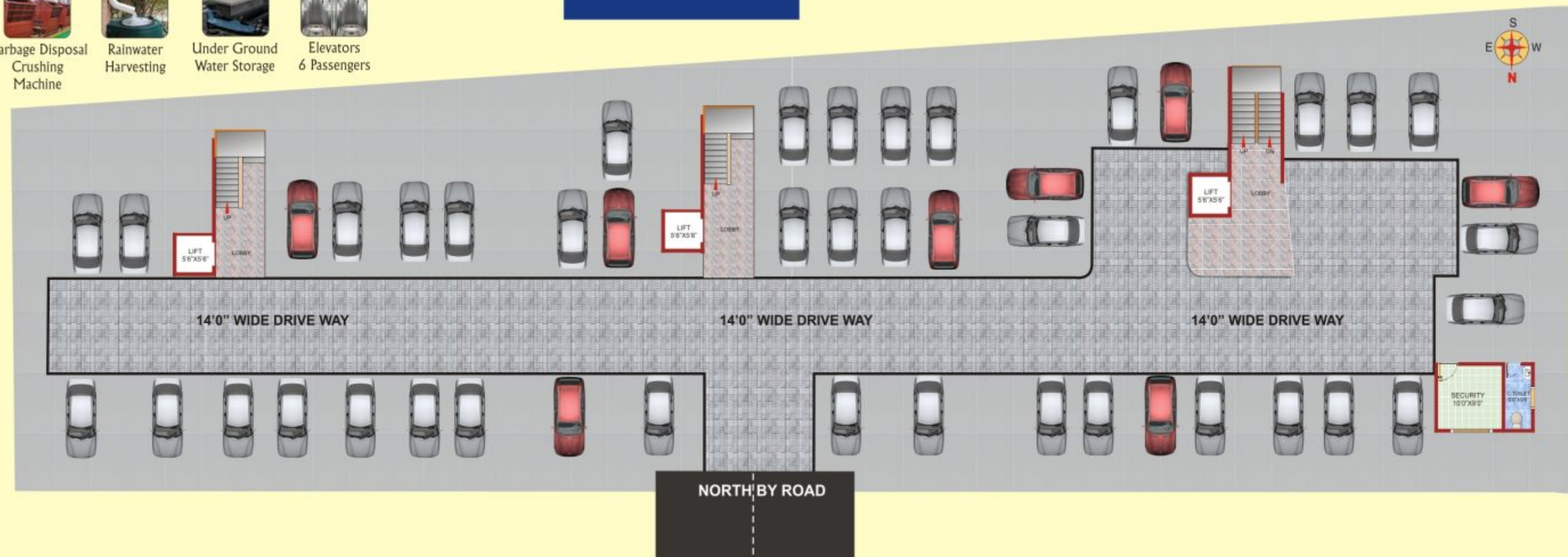


Excellent Opportunity
for World Class Amenities
Avail Membership form
Ramanashree
California Resort

Sports Amenities Indoor



Sports Amenities Outdoor





All you see around you greenery, Even when all the flats taken and built. Enough breathing space, plenty of lounge space in terms of parks and vegetation right within the gated campus. With playing ground and Children Play area, roads for a leisurely stroll, swimming pools to soak yourself in & plantation of trees. Sweet-smiling Eucalypti and manicured shrubbery greets you as you enter your home. No community gives you as much greenery as Ramanashree Blue Sky Gardenia.





A Blend Of Quality, Elegance, & Comfort



The Perfect place for the perfect Family



UNIT-1 | 1440 Sq.ft | 3 BHK



UNIT-2 | 1025 Sq.ft | 2 BHK



UNIT-3 | 1300 Sq.ft | 3 BHK

UNIT-4 | 1500 Sq.ft | 3 BHK

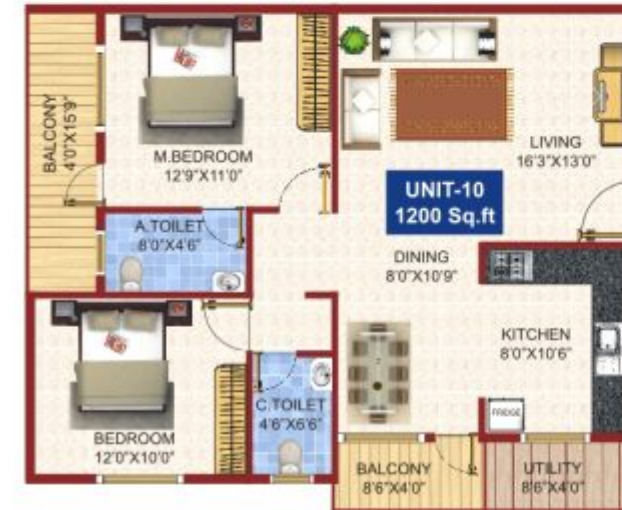


UNIT-5 | 1150 Sq.ft | 2 BHK



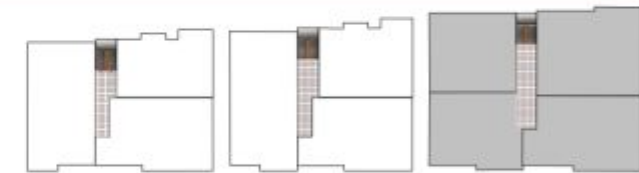
UNIT-6 | 1300 Sq.ft | 2 BHK

UNIT-7 | 1100 Sq.ft | 2 BHK



UNIT-10 | 1200 Sq.ft | 2 BHK

UNIT-8 | 1500 Sq.ft | 3 BHK



UNIT-9 | 1250 Sq.ft | 2 BHK

Specifications

- STRUCTURE** : R.C.C. Framed structure Designed for Zone II Regulations, as per Structural drawings.
- WALLS** : 8" Solid Block External 4"Thick Concrete Blocks Walls.
- PLASTERING** : Smooth with Lime Rendering for interior to received OBD and sponge Finish for exterior to receive cement paint.
- DOORS** : Main door with teak wood frames and teak wood shutters with brass fittings. Internal doors of Mathi or Honne wood frames and Modular shutters.
- WINDOWS** : Aluminium windows with MS Safety grills enamel painted as per architects drawing and colour.
- FLOORING** : Vitrified flooring for living, bedrooms, drinking, dining, kitchen areas & Sadarhalli grey granite will be provided for common area and lobby and Ceramic Tiles for balcony's & Bathrooms.
- KITCHEN** : Granite counter top with stainless steel sink, and board 2' height glazing tiles Dadoing shall be provided above the platform
- BATHROOMS** : Dadoing shall be provided in toilets / bathrooms for height of 7' and flooring ceramic glazing tiles, white sanitary fixtures, premium CP fittings & Health faucets MAKE: HINDWARE SANITARY, C.P / any other standard make.
- ELECTRICAL** : Concealed type conduits fire retardant wire and switches of Anchor Roma make. TV and Telephone points one each in the living room and master bed room will be provided.
- PAINTING** : Plastic Emulsion for interior and exterior shall have weather proof paint and enamel paint for the wood and grill work.
- LIFT** : 3 lifts Kone / Blue Bell or Standard Make
- WATER** : Bore well water for entire flat.
- INTERIOR** : At extra cost as per the clients choice.





TYPICAL FLOOR PLAN



NORTH BY ROAD