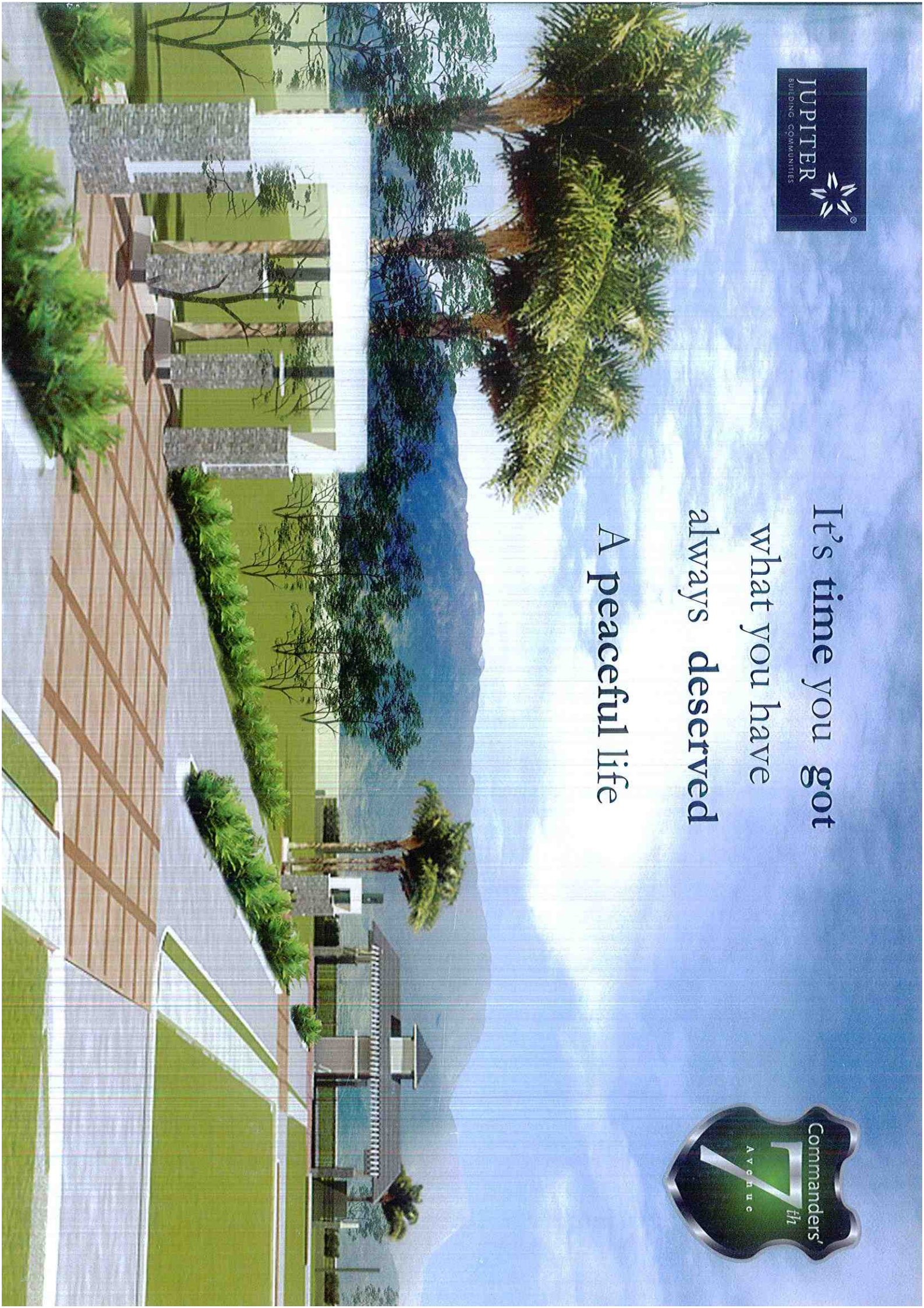




It's time you got
what you have
always deserved

A peaceful life





Welcome to Commanders 7th Avenue

A continuation of Jupiter's mission to provide the members of Indian Armed Forces with wonderful living spaces and lucrative investments.

Offering a choice of Serviced plots in an infrastructure ready, secure and tranquil enclave spread over 25 acres.

Located on NH-7, just an hour's drive from Bangalore in the nature kissed environs of Chikaballapur.

Read on and discover just how Commanders 7th Avenue meets the promise to be the home that you have always dreamt of settling down in.

Infrastructure ready

- Grand Entry Plaza
- Completely compounded
- 60 Feet Main Roads and 40 Feet Sub Roads
- All electrical cables are underground
- Water, Sewage and Electricity connection to each site
- Closed box type storm water drains
- Rain water harvesting
- Sewage Treatment Plant
- Street lights & footpaths
- Tree lined avenues and street names
- Open spaces and fenced parks
- Club House
- Jogging track

Convenient choice of plot sizes

40FT X 60FT
50FT X 80FT

The investment advantage

- North Bangalore and the Airport Zone are fast emerging as investment destinations.
- Chikkaballapur is booming with multifaceted growth and offers value for your investment rupee. Now is the time to invest here.
- Direct Access to and from NH-7 into 7th Avenue, in the high growth corridor of North Bangalore.

Magnificent Entrancel!



JUPITER

B U I L D I N G C O M M U N I T I E S

COMMANDERS 7TH AVENUE

Chikkaballapur –Bangalore’s fast growing, satellite suburb of tomorrow

“Chikkaballapur is witnessing maximum development around it and fast emerging as a District HQ since 2007. Several infrastructure and public amenity projects have been initiated to enhance the quality of life.”

- These include:
- A comprehensive underground drainage system for Chikkaballapur town
 - A Regional Transport Office
 - The District Commissioner’s office
 - Mini Vidhansoudha
 - Chikkaballapur to Kolar Railway
 - Science City on 100 Acres and Silk City on 70 acres
 - New VTL Campuses on 400 acres
 - Proposed Govt District Hospital and a Medical College

Salubrious Climate

Chikkaballapur has a pleasant temperature all year round. The maximum temperature ranges between 24 and 32 C, while the minimum temperature is usually between 21 and 27 C

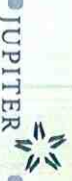
New developments underway in and around Chikkaballapur

- Proposed Manipal University
- Proposed IIT Muddenahalli
- Business Park near BIAL
- Convention Centre by Government of Karnataka including five star hotels
- Information Technology Investment Region (ITIR) on 12000 acres, a Project by Central Government
- IT Specific SEZ having a mix of IT, Commercial Space, Hotels, Service Apartments, Residential & Retail Facilities
- Sports City on 200 acres

There are several well developed High end projects progressing around Chikkaballapur like Prestige Golf shire on 275 acres, QVC Villas on 60 acres and Welness India’s Valley of the Winds.

Excellent road connectivity through National Highway 7

- 22 km from Devanahalli and International Airport
- Hebbal flyover- 42 kms
- NH-7- 0 kms



JUPITER

BUILDING COMMUNITIES

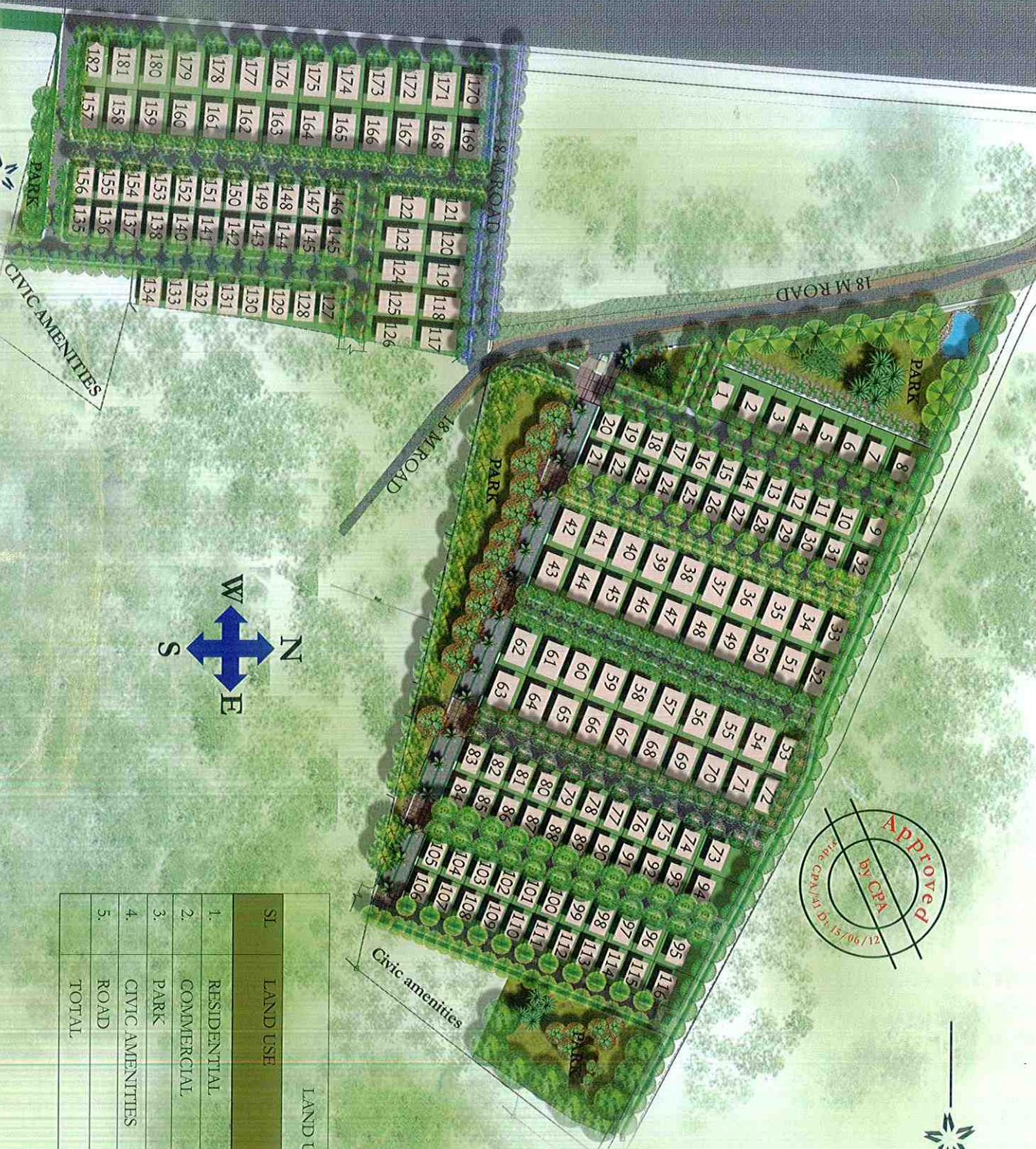
COMMANDERS 7TH AVENUE

To Hyderabad

National Highway - 7 (BYPASS)

BANGALORE

Numbered Plan



| LAND USE ANALYSIS | | | |
|-------------------|-----------------|--------------|--------|
| Sl | LAND USE | AREA IN SQMT | % |
| 1. | RESIDENTIAL | 53059.25 | 51.52 |
| 2. | COMMERCIAL | 28440.96 | 2.76 |
| 3. | PARK | 17367.74 | 16.86 |
| 4. | CIVIC AMENITIES | 5490.34 | 5.33 |
| 5. | ROAD | 24234.30 | 23.53 |
| | TOTAL | 102992.59 | 100.00 |

JUPITER

BUILDING COMMUNITIES

COMMANDERS 7TH AVENUE

—  Verdant Parkland - Ample avenues to meet and mingle



JUPITER 

BUILDING COMMUNITIES



—  Perfectly located – abutting NH7

COMMANDERS 7TH AVENUE



From a Company that is
Committed to your Happiness

Commanders 7th Avenue is developed by Jupiter Infrastructure, a company led and managed by a team of Ex-Defence personnel. Our core competence is in meeting the housing and property investment needs of the personnel from Indian Armed Forces and provide a single point solution customised for them.

At Jupiter we are committed to providing innovative and cost effective infrastructure within the backdrop of sound corporate governance, total quality management, professional integrity and transparency.

Having completed 8-10 projects and with another five underway, we offer Real Estate products at rates 15-20% less than the prevailing market.



The Jupiter Factor of Trust

- Right product, right time, right community at right location
- Meeting of statutory & legal compliances
 - Legal vetting of all documents and procedures
 - Clear and marketable titles
 - Strict adherence to conversion, plan approval & execution as per authority
- Facilitate financial solutions and Competitive rate of interest through Banks
- Delight by Service after sales
- In depth knowledge of market trends, pricing and skills to negotiate in the interest of Service personnel
- Assurance on the quality and timely delivery of the projects
- Safety, security and assured appreciation of investment



JUPITER

JUPITER



BUILDING COMMUNITIES

COMMANDERS 7TH AVENUE



Commanders' Galleria



Commanders' Cascade



Commanders' Marvel



Commanders' DUO



Commanders' Aeterview



Commanders' Retreat



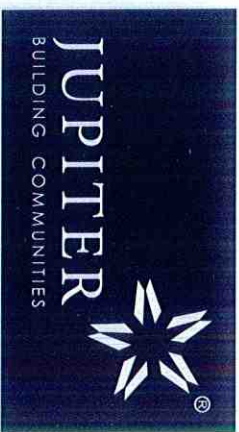
Commanders' Pinnacle



Commanders' Grand



Commanders' Glory



Jupiter Infrastructure (Bangalore) Pvt Ltd
 #34, E-Block Extn, Behind Swathi Gardenia,
 Sahakarnagar, Bangalore- 560092
 Call us today!
 080 - 42404000 / 93424 40440 / 90088 99001
 info@jupiterinfra.com | www.jupiterinfra.com